



产品特性 Product features

- 专门为气缸行业开发的耐磨活塞环。比PTFE制成的活塞环安装更简易。可提供CSB-EPB®标准材料制成的高耐磨活塞环。
 - 耐磨性能出色；
 - 装配简易；
 - 免维护，自润滑；
 - 耐腐蚀、质量轻。
- Wear resistance piston ring specially developed for the pneumatic pump industrial application. It is easier to be installed comparing with the PTFE piston ring. Standard materials CSB-EPB®.
- Good wear resistance;
 - Easy assembly;
 - Maintenance free and self-lubricated;
 - Corrosion resistance and light weight.

结构设计 Structure design

CSB-PPR 塑料活塞环标准产品均采用斜开口设计，使得安装简易和长期安全平稳运行。

CSB-PPR plastic piston ring is designed with slipped gap that ensures easy assembly of the bearings and long term stable operation.

材料设计 Material design

CSB-PPR塑料活塞环标准材料采用耐磨性出色的CSB-EPB®系列制成，使得活塞环在高速运动下保持出色的耐磨性能。

CSB-PPR plastic piston ring is made from CSB-EPB® materials which is a good wear resistance polymer ensures outstanding wear resistance feature of the bearings under high speed operation condition.

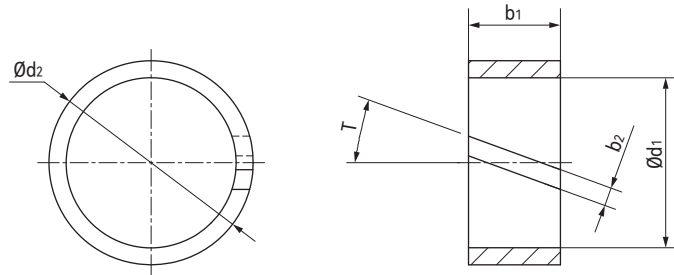
安装设计 Assembly design

CSB-PPR 由于斜开口设计使得安装特别简易，直接用手从开口处将轴承拉大套入活塞上推入到安装槽内即可。

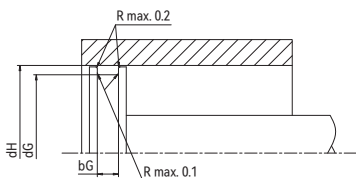
CSB-PPR slipped gap design allows an easy assembly, simply open the bearing by hand from the gap and position the bearings to the required location until it is pushed into the mounting groove.



标准规格 Standard specifications

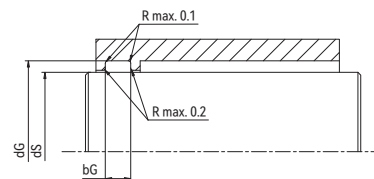


产品编码 Part No.	d_1 [mm]	d_2 [mm]	b_1 [mm]	$b_2 \pm 0.5$ [mm]	T [°]
PPR13-1012-20-025-054	10	12	5.4	2.5	20
PPR13-1214-20-025-054	12	14	5.4	2.5	20
PPR13-1416-20-025-054	14	16	5.4	2.5	20
PPR13-1618-20-025-054	16	18	5.4	2.5	20
PPR13-2023-20-025-054	20	23	5.4	2.5	20
PPR13-2528-20-025-054	25	28	5.4	2.5	20
PPR13-2832-20-025-054	28	32	5.4	2.5	20
PPR13-3034-20-025-054	30	34	5.4	2.5	20
PPR13-3539-20-025-054	35	39	5.4	2.5	20
PPR13-3540-20-025-054	35	40	5.4	2.5	20
PPR13-4044-20-025-054	40	44	5.4	2.5	20
PPR13-4550-20-025-054	45	50	5.4	2.5	20
PPR13-5055-20-025-054	50	55	5.4	2.5	20
PPR13-5560-45-020-250	55	60	25	2	45
PPR13-5660-00-025-079	56	60	7.9	2.5	0
PPR13-6065-20-025-054	60	65	5.4	2.5	20
PPR13-7075-20-025-054	70	75	5.4	2.5	20



推荐活塞安装方法 Installation recommendations for pistons

尺寸 Size [mm]	dG h-公差 Tolerance	dH h-公差 Tolerance	bG
公称尺寸 Nominal size	dG=d1	dH=d2	bG=b1+0.2



推荐基座安装方法 Installation recommendations for housings

尺寸 Size [mm]	dS h-公差 Tolerance	dG h-公差 Tolerance	bG
公称尺寸 Nominal size	dS=d1	dG=d2	bG=b1+0.2

产品编码 Part No.:

PPR13-1012-20-025-054

